

*Top Reliability, Smart Design,
Valuable Product and Better Life*

DELUGE VALVE



DVG



*UL Listed
DNV, LR, BV, ABS Certified*

PROSAVE

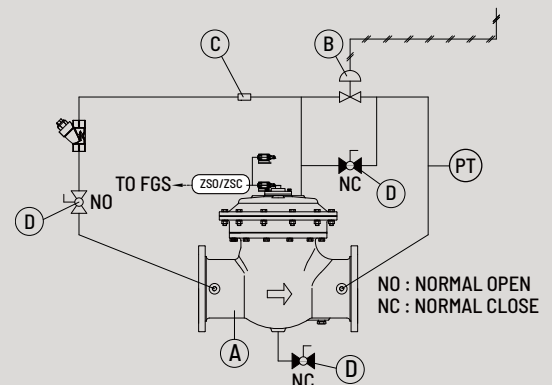
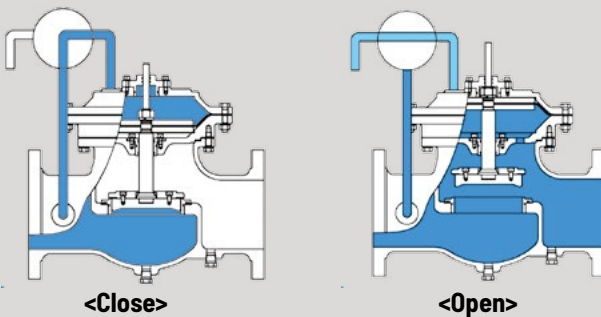
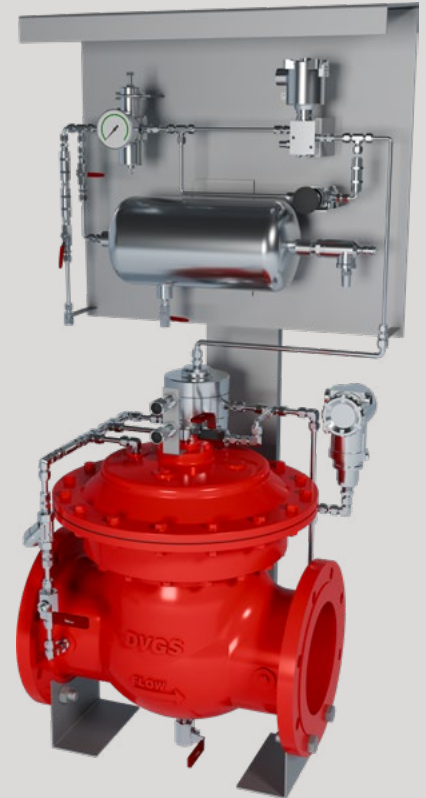
DELUGE VALVE

Introduction

PROSAVE's deluge valve is an automatically operated valve that receives an external electrical signal and can be manually operated if required. The valve is designed for use in controlling fluids in deluge, pre-action or foam-water type fire protection sprinkler systems. This valve consists of the main parts of body, diaphragm and cover. When pressure is applied to the top of the diaphragm using the pressure of the fluid acting on the inlet side, the disk is pressed to form a seal with the valve seat. The operation is accurate and the structure is simple, resulting in fewer failures and easy maintenance. It is free to change and add accessories attached to the valve, and it is customized according to customer's request

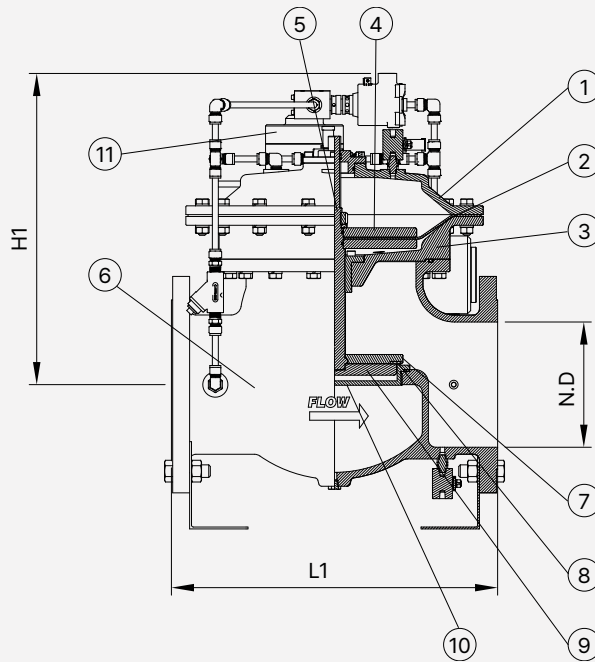
Operation

The valve closes completely when pressure from the inlet side of the valve is applied to the diaphragm chamber. When the valve is operated automatically or manually to relieve the pressure in the diaphragm chamber supplied from the inlet side, the inlet side pressure pushes the disk and opens the valve. (B) The pilot valve (or solenoid valve) is normally closed, so the inlet fluid pressure is continuously supplied to the diaphragm chamber and the main valve remains closed. When the (B) pilot valve (or solenoid valve) is actuated to open, the pressure supplied to the diaphragm chamber is relieved and the pressure of the inlet fluid pushes the disk to open the main valve. The valve can also be opened manually if necessary by operating the (D) on-off valve.



Benefit

- Hydraulic actuated diaphragm valve
- Quick response and pressure release
- Low pressure resistance
- Vertical or horizontal installation is possible
- Easy external reset
- Easy maintenance by diaphragm
- Compact and space-saving design
- High pressure rating and low pressure drop
- Compliance with ISO6182-5, UL260
- UL Listed and DNV, LR, BV, ABS certified



Dimension Table

SIZE	N.D	L1	H1
2	50	230	323
3	80	320	323
4	100	350	348
6	150	450	427
8	200	520	496
10	250	650	586
12	300	750	850
14	350	850	812
16	400	950	854

* Unit = mm

Part Description

Part No.	Description	Material 1	Material 2
1	Up Cover	B148-C95800	Stainless Steel
2	Diaphragm	NBR	NBR
3	Bottom Cover	B148-C95800	Stainless Steel
4	Diaphragm Pad	MONEL	Stainless Steel
5	Stem	MONEL	Stainless Steel
6	Body	B148-C95800	Stainless Steel
7	Disc	B150-C63000	Stainless Steel
8	Seat	NBR	NBR
9	Seat holder	B150-C63000	Stainless Steel
10	Seat ring	B148-C95800	Stainless Steel
11	Pilot Valve	B150-C63000	Stainless Steel

* The material can be changed at the request of the customer.

Typical Application

- Manual Actuated fire
- Suppression System
- Petrochemical, Oil & Gas
- Power Generation, Transformer & Transmission Plants
- Flammable Storage
- Onshore/Offshore

Sepecification

- END DETAILS ANSI B16.42 Flanged
ANSI B16.5 Flanged
- PRESSURE RATING 150 Class Max.285 psi
300 Class Max.400 psi
- TEMPERATURE RANGE WATER : 180°F (82°C)

**TOP RELIABILITY OF SAFETY & ENVIRONMENT IS THE FIRST
& MOST IMPORTANT**



Products

- Air Release Valves
- Combination Air Release and Air/Vacuum Valve
- Vacuum Breaker Valve
- Pilot Operating Pressure/Vacuum Valve
- Breather Valve
- Surge Relief Valve
- Axial Control Valve
- Deluge Valve
- Crankcase Explosion Relief Valve
- Explosion Venting Devices
- Flameless Explosion Relief Valve
- VOC Emission Protection Devices
- High Velocity Pressure/Vacuum Valve
- Flame Arrester
- Flame Screen
- Gas Free Cover
- Emergency Relief Hatch
- Pressure/Vacuum Relief Valve
- Net-zero Desalination system
- Hybrid solar still

Application Fields

- Offshore & Ocean Gas Plants
- Power and Desalination Plants
- Ballast System for ships & Offshore Plants
- Sea & Fresh Water Plants
- Marine Tank ships
- Cryogenic gas Facilities
- Petrochemical Plants
- Tank Terminals
- Marine Engines
- Generators
- Duct
- Water Shortage Regional
- Firefighting
- Hydrogen plants
- Waterworks

ISO9001 / ISO14001 REGISTERED

PROSAVE CO., LTD.

115-22, Techno valley 1-ro, Jillye-myeon, Gimhae-si, Gyeongsangnam-do, 50875, Korea

TEL. +82-(0)55-313-3510~1 FAX. +82-(0)55-313-3512
E-mail: prosave@prosave.co.kr www.prosave.co.kr

